

# HITACHI

## Powering Continuity. Driving Sustainability.

Delivering Advanced Power Electronics Solutions  
that empower Industries and sustain Progress.

## Shaping What's Next

Bridging Operational and Information Technology

Hitachi Hi-Rel is the critical operational technology (OT) partner that secures and enables the digital future (IT). We assure the seamless continuity that supports India's next great technological jump. We are dedicated to the Hitachi vision of Social Innovation - creating solutions that contribute to a sustainable and resilient society.

We build the Power Electronics Solutions that make 'What's Next?' happen Today.

One Hitachi. One Vision.  
One Powered and Sustainable Future.



---

## Our Foundational Commitment

A Legacy of Trust

Leveraging deep, multi-decade expertise, we deliver best-in-class power electronics solutions for mission-critical infrastructure across diverse industries worldwide. Our solutions are built on Japanese precision and guaranteed by the adherence to global quality standards, enhancing energy efficiency and accelerating India's journey toward a sustainable and resilient future.

Your Trusted Power Electronics Partner

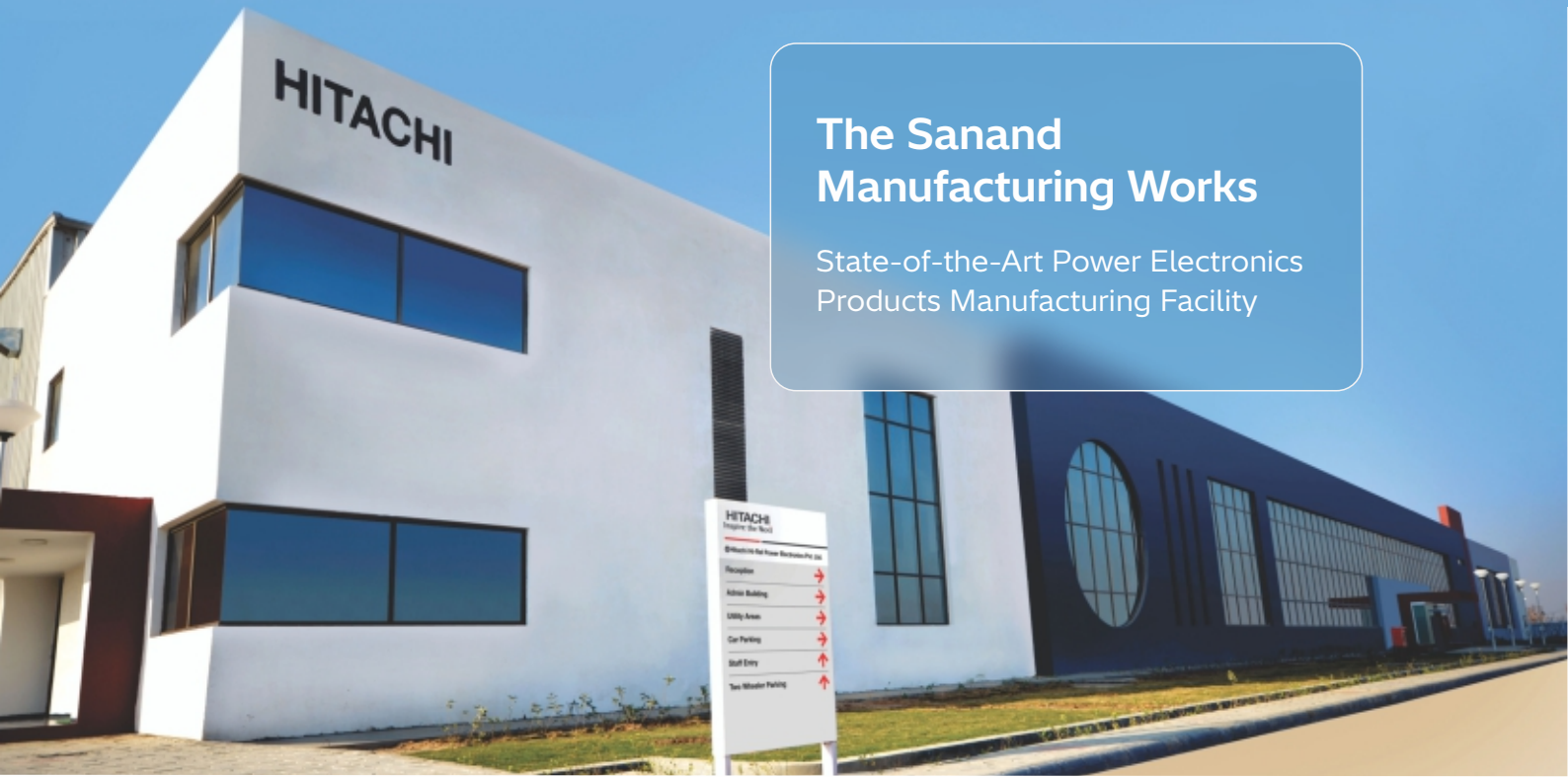


---

## Company Statement

- **Vision:**  
To be recognized as the most trusted Power Electronics Company by supplying superior products and services.
- **Mission:**  
Provide a Wide Range of Power Electronics Solutions to contribute towards Social Infrastructure Growth.
- **Values:**  
Customer Delight, Quality Orientation, Pioneering Spirit, and Sincerity.





## The Sanand Manufacturing Works

State-of-the-Art Power Electronics Products Manufacturing Facility

### About Hitachi Hi-Rel Power Electronics

#### High-Precision Manufacturing

Hitachi Hi-Rel Power Electronics (HHPE) stands as an essence of reliability and innovation within the power electronics domain, delivering comprehensive solutions for the most critical infrastructure and diverse industries. Established in 1983 as Hi-Rel Electronics Pvt. Ltd., our journey evolved significantly in 2015 when we became a 100% subsidiary of Hitachi, Japan, a Global Fortune 500 company. Today, Hitachi Hi-Rel empowers a diverse range of industries and organizations worldwide, enabling them to meet mission-critical applications demands through technologically superior, environmentally conscious and innovative power electronics products and solutions.

We are a pioneer with over four decades of unparalleled experience in power electronics and our vision, "To be recognized as the most trusted Power Electronics Company by supplying superior products and services," guides our operations. This vision has cultivated a significant level of trust within the Indian power electronics market and beyond. We are a leading manufacturer renowned for our specialized offerings Industrial UPS, IT & Infra UPS, Drives (VFDs), Solar Inverters and Railway Products.

Our unwavering commitment to excellence is validated by approvals from leading consultants and EPC players. We operate a world-class, state-of-the-art manufacturing facility in Sanand, India, and our National Customer Support Centre in Gandhinagar, India ensures robust post-sales assistance and exceptional service uptime. Hitachi Hi-Rel is a testament to quality and operational excellence, holding ISO 9001:2015, ISO 14001:2015, ISO 45001:2018 and ISO/IEC 27001:2022 certifications and recognized as a "Great Place to Work". Our extensive sales network and robust service infrastructure reach globally, establishing a strong presence in markets across South East Asia, the Middle East, Africa and Brazil.

Powering Continuity. Driving Sustainability.



## Industrial UPS Systems

Uninterrupted Power Reliability for  
Mission Critical Industrial Applications  
& Process Industries



## IT & Infra UPS Systems

Uninterrupted Power Reliability for  
Critical IT Infrastructure

# Critical Power & Continuity: UPS Systems

Zero Downtime Resilience for Critical Loads

We deliver a comprehensive range of AC & DC Uninterruptible Power Supply (UPS) solutions engineered for unparalleled reliability and scalability. Our systems assure absolute continuity for all mission-critical applications, protecting vital infrastructure from power quality disturbances and outages. We employ advanced power conversion and monitoring technologies to ensure systems perform optimally under the most demanding conditions.

**Powering Progress across Diverse Sectors:** Oil & Gas, Power, Metal & Mining, Cement, Steel, Water & Waste Water Treatment, Pharmaceutical, Chemical, Plastic, Textile, Engineering, Data Centre, Telecom, Banks/ATM, Healthcare, Telecommunications and many others.

---

## Industrial UPS for Mission Critical Industrial Applications:

- 3Ø Input - 1Ø Output System from 5 kVA to 250 kVA
- 3Ø Input - 3Ø Output System from 10 kVA to 600 kVA
- Battery Charger from 24 VDC to 360 VDC (up to 1200A)



## Industrial UPS for Process Industries:

- 3Ø Input - 1Ø Output System from 5 kVA to 250 kVA
- 3Ø Input - 3Ø Output System from 10 kVA to 600 kVA

---

## IT & Infra UPS for Critical IT Infrastructure

- 1Ø Input - 1Ø Output System from 1 kVA to 10 kVA
- 3Ø Input - 1Ø Output System from 10 kVA to 20 kVA
- 3Ø Input - 3Ø Output System from 10 kVA to 500 kVA



---

Exceptional Safeguard Against Power Disruption



## Variable Frequency Drives (VFDs)

Master Your Industrial Process Control  
for Enhanced Efficiency

# Optimized Control & Efficiency: Variable Frequency Drives (VFDs)

Intelligent Motor Control for Industrial Performance

Advanced motor control solutions for driving complex industrial processes and heavy machinery. Our drives feature superior performance through advanced power semiconductors and thermal management, significantly optimizing power consumption and reducing overall energy waste. It ensures superior performance and long-term value through highly efficient operation and excellent operator interfaces.

**Powering Progress across Diverse Sectors:** Oil & Gas, Power, Metal & Mining, Cement, Steel, Water & Waste Water Treatment and many others.

---

## Medium Voltage Drives: Precision Control for High-Power Applications

- Up to 19,000 kVA (3.3 kV to 11 kV)



## Low Voltage Drives: Versatile and Efficient Solutions for Everyday Automation

- From 0.2 kW to 450 kW

---

Most Energy Efficient Means of Process Control

# Solar Inverters

Unlock the True Potential of Your  
Solar Energy System



## Enabling Sustainability & Mobility: Solar Inverters

Optimal Energy Harvest and Grid Integration for Solar Projects

Our inverters feature contemporary Hitachi technology, ensuring superior performance and reliable integration into the grid. They maximize energy harvest and support India's journey toward a sustainable, decarbonized future.

### Grid-Tied Solar Central Inverters:

Optimal Energy Harvest and Grid Integration for Solar Projects

- 3.3 MW, 3.125 MW & 2.5 MW Outdoor Inverters (1500 VDC)
- 250 kW to 2500 kW (1000 VDC)

### Grid-Tied Solar String Inverters:

Versatile and Efficient Power Conversion for Distributed Solar Projects

- 1.1 kW to 6 kW (1000 VDC) (1ph)
- 3.3 kW to 125 kW (1100 VDC) (3ph)
- 250 kW & 350 kVA (1500 VDC) (3ph)



Highly Efficient Conversion Technology

---

### Powering Rail Transport: Railway Products:

Versatile and Efficient Power Specifically designed for Demanding Railway Applications

Robust and reliable Regulated Battery Chargers and Railway Inverters, specifically engineered for the highly demanding environment of Indian rail transport systems, contributing to operational efficiency and passenger safety.



### Regulated Battery Chargers:

Ensures Continuous Power for Railway Battery Systems for LHB Coaches with 6.5 kW range

### Under Slung (iTrac) Railway Inverters:

Ensures reliable power for AC Coaches with 25 kVA range

Empowering Efficient Rail Operations

## Assurance Culture: Quality and Reliability

### Quality Built-In, Not Tested-In

At Hitachi Hi-Rel, quality is a discipline, not a department. Guided by Japanese philosophies of continuous improvement and learning from experience, we maintain stringent standards from inward material control to final release. Our verification rigour ensures that every product is validated under extreme conditions, complying with the highest national and international standards.



Excellence. Certified. Trusted.

---

## The Human Element: Skill and Safety

### Developing World-Class Expertise

We invest deeply in our people, ensuring our engineers possess the technical competency to design and manufacture the world's most complex power electronics. Through rigorous certification and global industrial standards, we nurture a workforce that values precision and professional excellence.

### Operational Safety & Control

Safety is our primary mandate. Through mandatory safety protocols, daily risk-awareness training and secured testing zones, we ensure a controlled environment where "Safety First" is a lived reality.

Safety First. Safety Always.

---

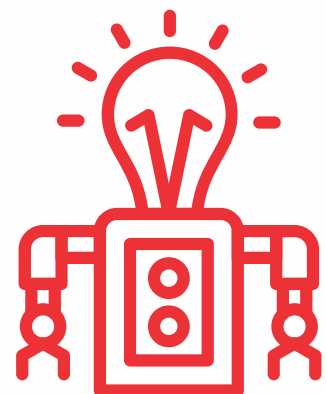


## The Road Ahead: Innovation and Value

### Driving Progress through Collaborative R&D

Our R&D team is focused on continuous innovation and product basket expansion, leveraging collaborative knowledge sharing with Hitachi Japan. This partnership enables us to continuously apply the latest global technologies, ensuring we provide maximum value to our customers.

Our core principle is ongoing **Value Engineering** - reducing total cost of ownership without ever compromising the renowned quality and long-term reliability of our products.

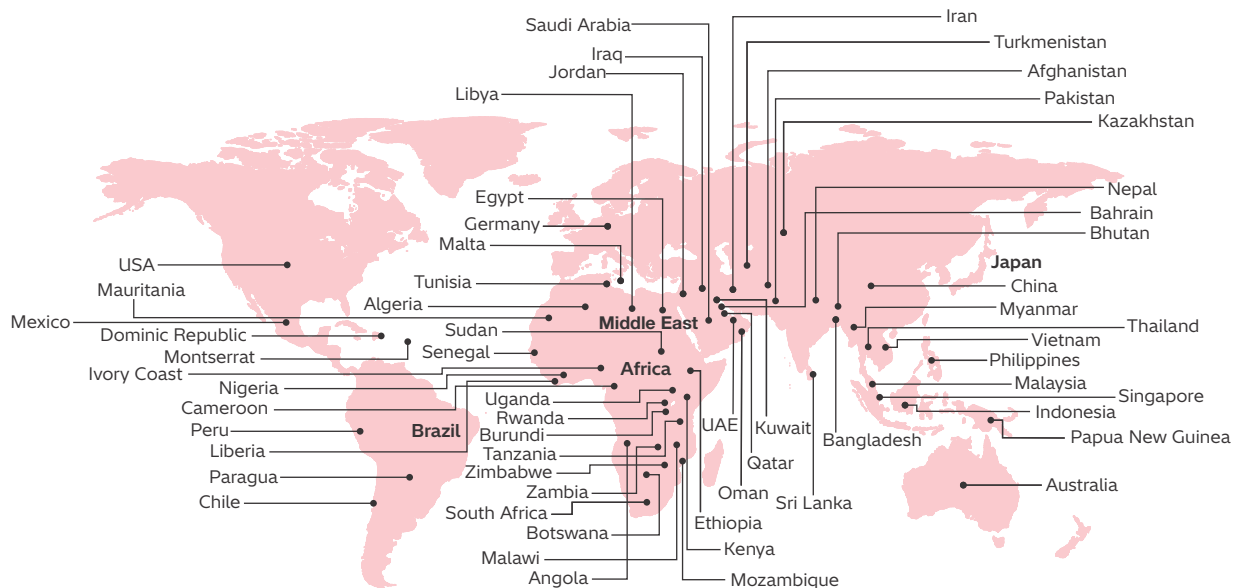
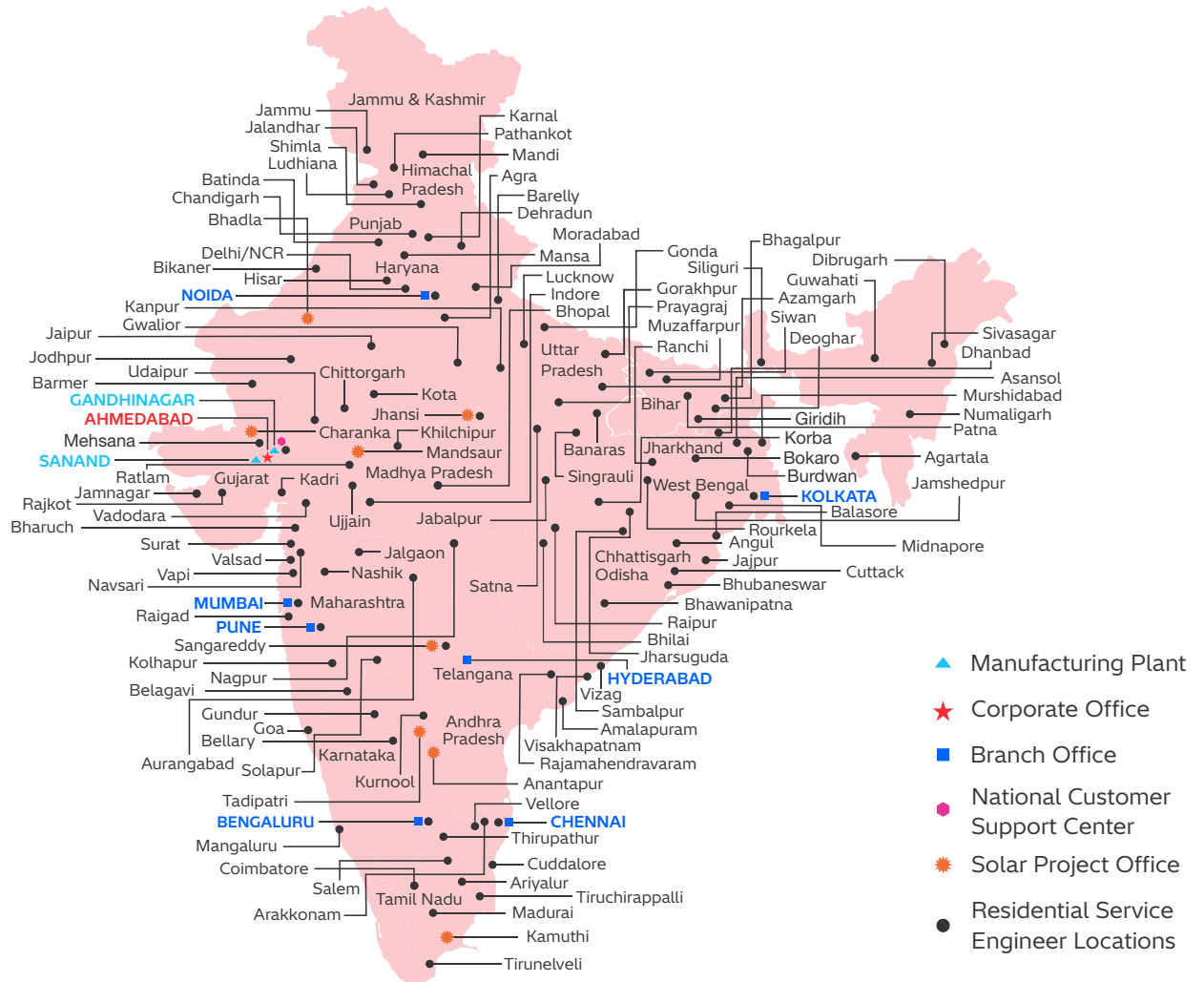


Technology Leadership & Commitment to Sustainability: Powering India's Future

# Global Footprint and Reach

Delivering Critical Power Solutions Worldwide

We are a key manufacturing hub for global power electronics solutions, capable of meeting diverse international requirements. Our ability to supply specialized, high-reliability products to various industries across international territories reinforces our commitment to serve critical loads globally.



## **Hitachi Hi-Rel Power Electronics Pvt. Ltd.**

Delivering Advanced Power Electronics Solutions that empower Industries and sustain Progress.

**Registered Office:** B-52, Corporate House, Near Judges Bungalow, Bodakdev, Ahmedabad - 380054, Gujarat, India. Phone: +91-79-66046200

**Sanand Works:** Plot No. SM 3 & 4, Sanand GIDC II, Industrial Estate, Bol Village, Sanand - 382170, Gujarat, India. Phone: +91-2717-678777

**Gandhinagar Facility:** B-14/1 & 171, GIDC Electronics Zone, Sector - 25, Gandhinagar - 382028, Gujarat, India. Phone: +91-79-61700500

[www.hitachi-hirel.com](http://www.hitachi-hirel.com)